



**maxi·
therm**[®]
steam made easy

The Maxi-Therm difference

**Engineered Simplicity.
Proven Performance.**

maxi-therm.net

Smart steam solutions for energy, footprint, and operational efficiency.

A vertical beam of blue, sparkling particles, resembling a stream of water or a shower of stars, set against a black background. The particles are concentrated in the center and spread out towards the edges, creating a sense of depth and movement.

Why **STEAM**
still matters?



A timeless technology, reimagined for today's energy challenges.

Steam has been around for over a century. Yet today, in a world demanding more efficient, decarbonized, and resilient energy solutions, steam stands out as an alternative that's not only still relevant, but more essential than ever.

Unlike other systems that rely heavily on electricity or complex networks, steam is simple, efficient, and incredibly adaptable:

- It carries more energy per pound than water.
- It travels easily, without pumps, even over long distances.
- It's non-toxic, visible, non-flammable, and safe to operate.
- It can be produced from a wide range of green energy sources: nuclear, waste-to-energy, biomass, solar, hydrogen, geothermal, and future green fuels.
- Steam is safe and reliable. Steam leaks are never an emergency fix.

And in the context of district energy, steam offers a scalable solution; heating and cooling entire neighborhoods, campuses, or hospitals, all while easing pressure on the electric grid.

At Maxi-Therm, over the last 20 years, we've embraced steam not as a legacy, but as a forward-thinking solution.

Through innovation, we've simplified its use, improved its efficiency, and made it **more relevant than ever**.

Steamification isn't a step back.


It's a more thoughtful way forward, recognizing the limits of blanket electrification and using proven thermal systems to decarbonize smartly.



MADE IN NORTH AMERICA

Reinventing
how we work
with steam.

maxi-
therm
steam made easy

Designed & Built with   Products & Patented Technology

Less complexity. More performance.

For decades, working with steam meant dealing with bulky mechanical equipment, high maintenance costs, and complicated pressure regulation. That's no longer the case.

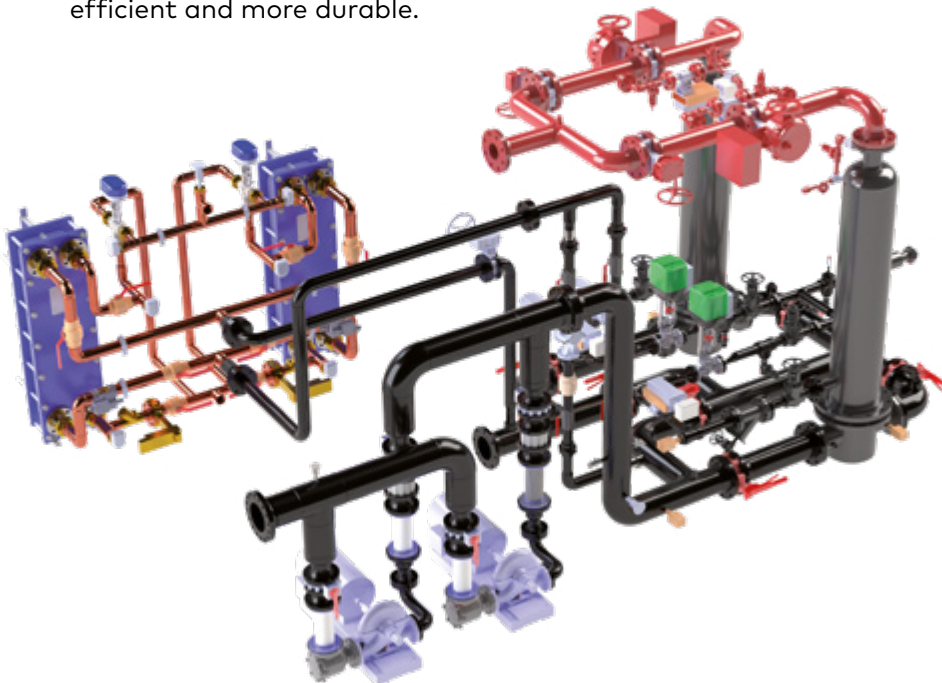
Maxi-Therm has rethought steam from the ground up, making it smarter, leaner and easier to implement and operate.

What's different?

- Fewer components. No pressure reducing valves. No steam safety relief valves. No vents to the roof. No condensate pumps.
- Patented vertical flooded heat exchanger. A design that extracts both latent and sensible heat for maximum efficiency.
- One moving part. Simplified operation with minimal maintenance.
- Compact footprint. Up to 40% less space required compared to conventional systems.
- Zero flash steam. Thanks to sub-cooled condensate discharge below 200°F.

The result?

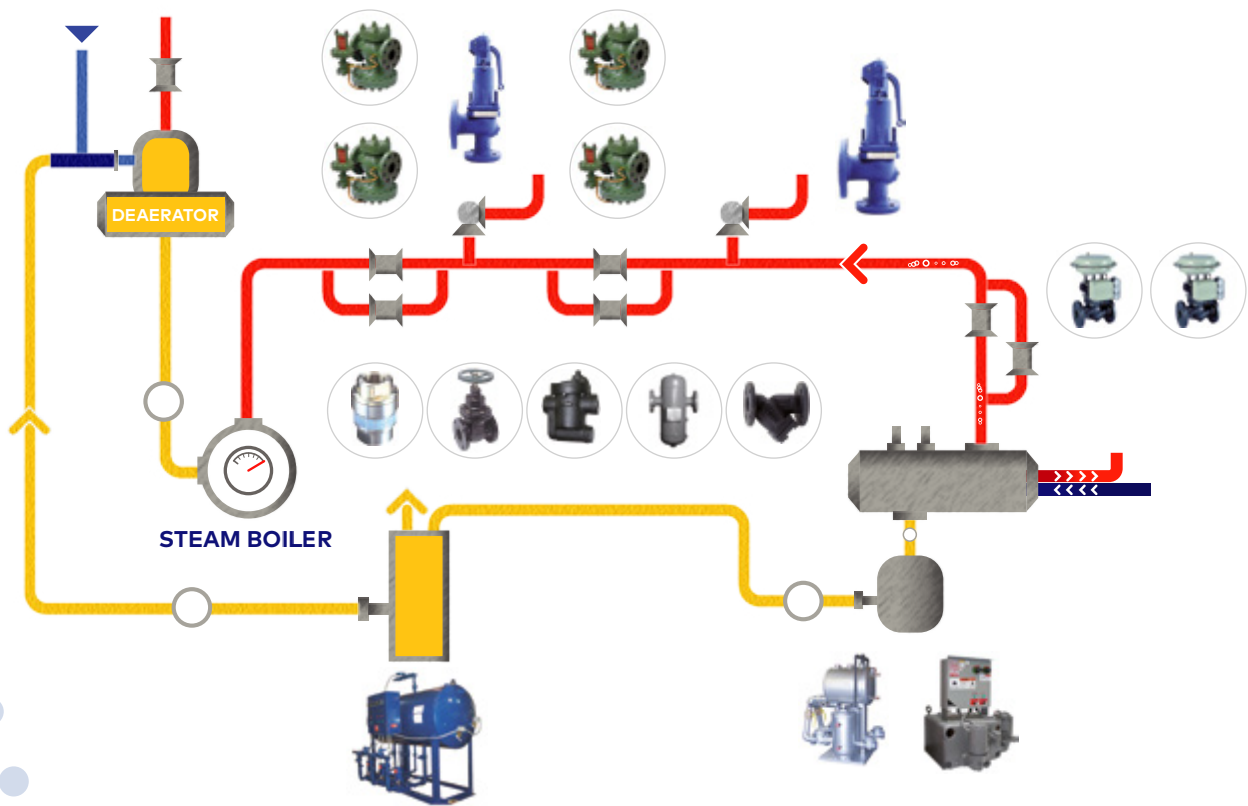
We didn't just refine the steam system, we made it quieter, cleaner, more efficient and more durable.



A fully redundant steam-to-hot-water heating system, complete with circulating pumps and domestic hot water heaters. Every unit is pre-piped, pre-wired, and factory-tested to ensure seamless installation and reliable performance.

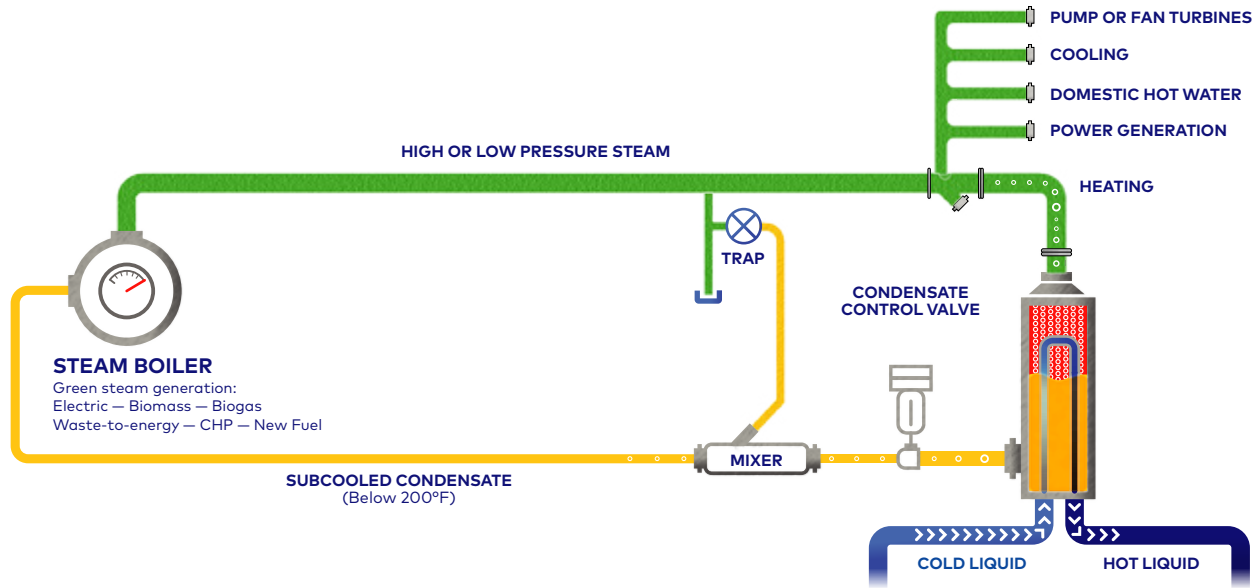
Conventional steam technology.

Traditional steam systems are based on technology that's more than a century old. It's costly to operate and maintain and misaligned with today's performance expectations. Their outdated design leads to significant energy loss, increased maintenance requirements, and escalating lifecycle costs.

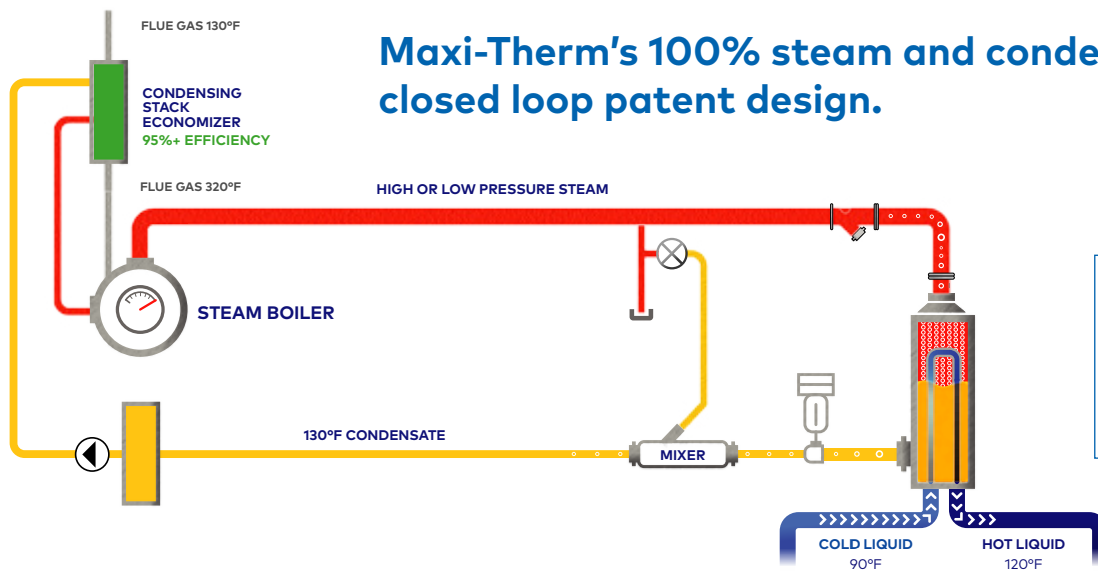


Maxi-Therm's solutions are smarter, more efficient, and engineered for long-term reliability; not systems built on 100-year-old principles.

Maxi-Therm's simplified steam innovation.



Maxi-Therm's 100% steam and condensate closed loop patent design.



The Maxi-Therm Difference :

- Achieve 95%+ combustion efficiency on natural gas for superior energy performance.
- Maintain under 1% surface blowdown, reducing waste and maximizing boiler output.
- Operate with little to no make-up water, significantly lowering utility consumption.
- Experience drastically reduced water-treatment costs thanks to cleaner, closed-loop operation.
- Eliminate the need for a deaerator, simplifying the system and reducing capital expenses.
- Avoid oxygen infiltration from vacuum breakers and vents, protecting equipment and extending system life.
- Benefit from low-temperature condensate return, minimizing radiant heat loss and improving overall efficiency.

MADE IN NORTH AMERICA



maxi-therm
steam made easy



Designed & Built with  &  Products & Patented Technology



Less to maintain. Less risk to manage. More predictability.

Maxi-Therm uses only one moving component, the condensate control valve. No PRVs, no condensate pumps, no blower fans.

Less downtime risk.

Only 4 critical components require planned maintenance, vs as many as 17 in a gas boiler system.

Lower lifecycle cost.

Fewer parts mean fewer failures, fewer service calls, less maintenance, and lower total cost of ownership.

	Maxi-Therm	Conventional	Gas boilers
Critical components to maintain	4	10 to 17	17
Total system maintenance complexity	●○○ (low)	●●○ (medium)	●●● (high)

Innovation Protected. Performance Proven.

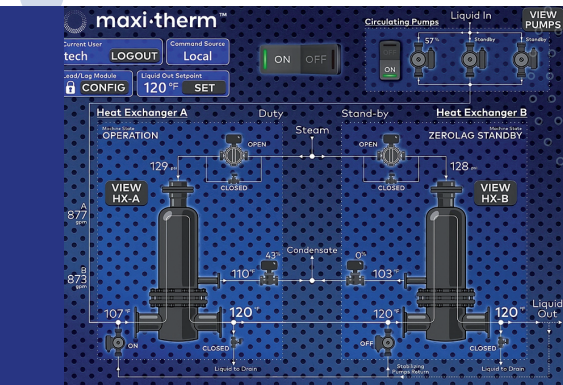
Each patent reflects years of research, engineering, client collaboration and passion. The result: exclusive technologies that transform thermal energy management and deliver unmatched efficiency and reliability.

Maxi-Therm patented systems	US and/or CANADA	Patent number
Vertical flooded design system	US CANADA	US 6,857,467 B2 2 416 353
Steam-to-steam generator design system	US	US 7,093,566
Vapor Generator design system	CANADA	2 488 000
Vertical Flooded Feed Forward design system	US (CANADA Pending)	US 9,920,996
ZeroLag design system	US CANADA	US 10,995,145 B2 2 883 083
100% steam condensate closed loop with 95% efficiency steam generation	US	US 12,130,011
Steam Sentry	US	Patent pending

MTIntelligent Control Panel

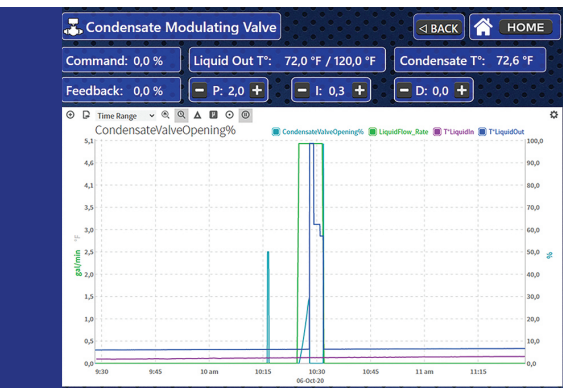
Smart control for efficient steam system management.

The MTIntelligent Control Panel is a smart control solution designed to optimize the performance and reliability of Maxi-Therm steam systems. It integrates real-time monitoring, automated logic, and remote connectivity in a compact, user-friendly format.



Circulating pumps module

Centralized indicators to support accurate system monitoring and verification.



System Trends

Automated data acquisition with continuous logging of performance metrics for comprehensive analysis.

Component	Status	Life cycle	Time left	Reset
Liquid Out Temperature Sensor	Maintenance needed	-	1461 day	RESET
Component	OK	Life cycle 4 yr	Time left 1461 day	RESET
Liquid In Temperature Sensor	OK	Life cycle 4 yr	Time left 1461 day	RESET
Component	OK	Life cycle 4 yr	Time left 1461 day	RESET
Condensate Temperature Sensor	OK	Life cycle 4 yr	Time left 1461 day	RESET
Component	OK	Life cycle 4 yr	Time left 1461 day	RESET
Condensate Pressure Sensor	OK	Life cycle 4 yr	Time left 1461 day	RESET
Component	OK	Life cycle 4 yr	Time left 1461 day	RESET
Steam Pressure Sensor	OK	Life cycle 4 yr	Time left 1461 day	RESET
Component	OK	Life cycle 4 yr	Time left 1461 day	RESET
Liquid Flow Sensor	OK	Life cycle 4 yr	Time left 1461 day	RESET
Component	OK	Life cycle 2 yr	Time left 720 day	RESET
Air Vent	OK	Life cycle 2 yr	Time left 720 day	RESET
Component	OK	Life cycle 2 yr	Time left 720 day	RESET
Strainer Bledrain	OK	Life cycle 2000 hr	Time left 93 day	RESET

Preventive maintenance schedule

Proactive maintenance to maintain reliability, safety and optimal performance.

Key features:

- Integrated maintenance schedule on parts based on original manufacturer life expectation.
- Smart automation with cold start-up sequencing and load-responsive control logic reduces manual intervention.
- Touchscreen interface that simplifies navigation, system configuration and status visualization.
- Remote connectivity via Wi-Fi or direct access for remote diagnostics, updates and support.
- Real-time alerts with built-in alarms for temperature, pressure or component faults.
- Data capture with logging of system performance, trends and diagnostics for operational analysis.
- Integration-ready and compatible with BACnet/IP and other standard building automation systems.

System benefits:

- Simplifies operation and maintenance
- Improves response time and operational efficiency
- Reduces downtime through early detection
- Standardized control architecture across all units

The MTIntelligent Panel ensures that each Maxi-Therm system operates with precision, adaptability and full visibility, all with minimal on-site configuration.

Steam Made Easy.

Practical advantages built into every Maxi-Therm system

Whether you're designing a new system or replacing aging infrastructure, Maxi-Therm offers more than just equipment. We deliver ready-to-use steam solutions that simplify integration, reduce energy use and minimize maintenance.

Every unit is designed to make your job easier:

FOR INSTALLATION

Modular package with only five connection points, including the control panel, reducing setup time and field labor.

FOR ENGINEERING & DESIGN

Tailored system sizing and layout to match space, pressure, and performance constraints.

FOR ENERGY SAVINGS

Innovative vertical flooded heat exchanger technology that maximizes thermal output and minimizes losses.

FOR MAINTENANCE

Minimal components and easy-access design lower service time and maintenance frequency.

FOR CONTROLS & MONITORING

Smart touchscreen interface with scheduling, alerts, data logging, and remote access via Wi-Fi or network connection.

FOR A REDUCED FOOTPRINT

Integrated vertical layout saves 40% minimum of mechanical room space compared to traditional systems.

FOR AFTER-SALES SUPPORT

Remote diagnostics and responsive technical assistance from our team and distributor network.

FOR DECARBONIZATION

Designed for compatibility with steam produced from renewable and low-carbon sources.

FOR RETROFIT PROJECTS

Compact design and simplified piping make integration with existing systems straightforward.

FOR LONGEVITY & RELIABILITY

Built using industrial-grade components with proven durability and stable long-term performance.

Maxi-Therm systems are engineered for ease without compromise. From design to installation to long-term operation, we make steam work smarter for you.

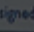
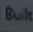


MADE IN NORTH AMERICA

 maxi-therm
steam made easy



What it
means
for you.

Designed & Built with  &  Products & Patented Technology

Energy Efficiency

Reduce energy use. Improve system performance. Stay compliant.

Across sectors, energy efficiency is no longer optional. It's a strategic priority and responsibility. Rising operational costs, carbon reduction targets and evolving regulations are driving organizations to rethink how they manage thermal energy.

Maxi-Therm systems are designed to meet this challenge. By extracting more usable energy from each pound of steam and eliminating unnecessary losses, our patented technology helps clients improve their energy profile without compromising reliability or output.

Key benefits:



Lower steam consumption

Up to 20% less steam used thanks to sub-cooled condensate discharge and flash steam elimination.



Higher heat recovery

Patented vertical flooded heat exchangers recover both latent and sensible heat from the steam cycle.



Reduced auxiliary loads

Eliminates pressure reducing valves and condensate pumps, lowering system energy demand.



Compatible with decarbonization strategies

Efficient closed-loop operation and ready for integration with boiler economizers.

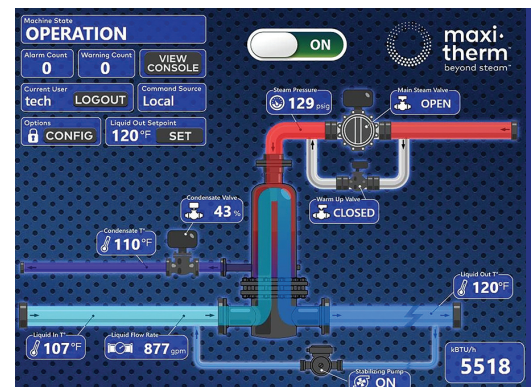


Cost predictability

Lower energy input results in more stable and predictable long-term operating costs.

Real time performance monitoring

User friendly navigation with clear data



In short: if your organization is aiming to reduce energy use, improve sustainability metrics, or meet internal efficiency targets, Maxi-Therm systems provide a clear, measurable path forward.

Low Maintenance

Simplify operations. Reduce downtime. Lower cost of ownership and full eligibility to system depreciation.

In many facilities, maintenance is one of the most unpredictable and costly aspects of system management. Unplanned service calls, aging components, and complex mechanical rooms can lead to operational inefficiencies and increased lifecycle costs.

Maxi-Therm systems are engineered to minimize that burden.

By reducing the number of components and using a streamlined, closed-loop design, our systems require less intervention, fewer inspections, and virtually no reactive maintenance.

Key benefits:

Only one moving part: the condensate control valve. No pressure reducing valves, no condensate pumps, no safety relief valves and no vents to the roof.

Lower wear and tear. Fewer mechanical components mean less risk of failure or leakage.

No vacuum breaker. Reduction in piping and component corrosion, extending equipment lifespan.

Automatic start-up. No manual assistance required. The system restarts automatically and is cold-start ready.

Remote support. The MTIntelligent panel enables quick diagnostics and remote access when needed.

With fewer service points and a simplified architecture, Maxi-Therm systems are easier to maintain and less prone to failure.

Maximize Your Tax Benefits with our Complete Package

When you purchase our completely engineered package, you can take advantage of 100% depreciation as the entire system qualifies as a single asset, allowing you to write off the full investment right away.

If only the material is purchased, then all parts and labor will not be eligible to depreciation, making your return on investment slower.

Reduced Footprint

Free up space. Simplify installation. Optimize your mechanical room.

Space is a valuable resource, especially in urban projects, institutional facilities or retrofit environments where every square foot counts. Traditional steam systems often require large mechanical rooms, complex layouts and additional support infrastructure.

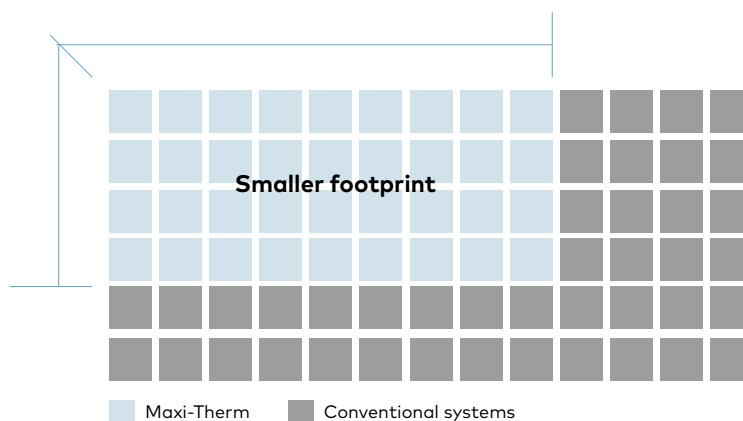
Maxi-Therm systems are built to reduce that burden.

Our vertical, skid-mounted design integrates all key components into a compact footprint, eliminating the need for auxiliary equipment and maximizing usable space.

What this means for you:

- Up to 40% smaller footprint compared to conventional systems.
- No PRV stations, no condensate receivers, no vents to the roof.
- Integrated skid package that includes pumps, exchangers, control panel and piping in one unit.
- Flexible layout that simplifies positioning and installation, especially in existing mechanical rooms, and can be custom-engineered to fit confined or predefined footprints.

Whether you're designing new infrastructure or replacing aging systems, Maxi-Therm helps you do more with less space.



A woman in a light blue shirt is pointing at a computer monitor. A man with a beard and glasses is looking at the monitor. The scene is dimly lit, suggesting an office environment. The text "An expertise from start to success." is overlaid in white. There are white dots in the bottom left corner.

**An expertise
from start to
success.**

From concept to operation and beyond, delivered through a customized 7-step process.

1

Assessment and Quotation

We begin by understanding your facility's objectives, energy profile, spatial constraints, and integration requirements. This includes reviewing architectural and mechanical drawings to ensure a solution that aligns precisely with your operational goals and technical environment.

2

Custom System Design

Our *engineering* team develops a fully customized steam system using Maxi-Therm's patented technologies. The design includes sizing, component selection, layout optimization, and control integration.

3

Manufacturing & Assembly

All systems are built in North America, integrating key components such as heat exchangers, pumps and control panels into a compact, skid-mounted package. Each unit is pre-piped, pre-tested and pre-certified for quality assurance.

4

Delivery & Documentation

The packaged system is delivered ready for installation, with clearly labeled connections and comprehensive technical documentation, including control logic, flow diagrams, and maintenance guidelines.

5

Startup & Commissioning

The system is designed for easy activation with automated cold start-up. Thanks to pre-programmed controls, field setup is minimal. On-site support is available if needed.

6

Remote Support & Lifecycle Service

Post-commissioning, the MTIntelligent Control Panel allows for remote diagnostics, updates, and support. Our team remains available for performance review, adjustments, or system optimization.

7

Exceptional Customer Care

Our commitment doesn't stop at operation. From day one, we are here to support you. That means rapid response, tailored guidance and a true partner mindset. We check in, not just check boxes, to ensure your system continues to perform to your satisfaction.

Who we serve.



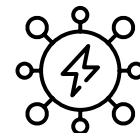
University Campuses

Reliable heat, low maintenance, and energy efficiency for complex multi-building networks.



Healthcare Facilities

Sterile steam. Trusted uptime. Low-risk heating for critical environments.



District Energy Networks

Efficient interfaces between steam utilities and buildings with a small footprint and big impact.



Engineers & Contractors

Simplified integration. Fewer surprises on site. Faster installs and better handoffs.



Industry & Manufacturers

Engineered reliability for steam-heavy environments: food, pharma, chemicals.



Real Estate & Commercial Buildings

Better use of space. No combustion. Connect to district energy without redesigning everything.

Our solutions.



ULTIMATE 5 PACKAGE

All your heating and cooling needs in one system.



Vertical Flooded Feed Forward
The steam water heater that will actually save you money.



Instant switchover for optimal reliability



Plate & Frame Feed Forward, SIDEARM



Steam Quality Controller
Helping control your steam quality during the sterilization process.



A wealth of knowledge at your fingertips.



Electronic Blending Valve
The evolution of water heaters is here.

SIMPLEX/ DUPLEX

Maxi-Therm's flagship products.

CLEAN STEAM

Making your steam pure for sterilization.



A network you can trust.

Performance you can count on.

Our exclusive distributors are trained to deliver the same level of expertise, reliability, and service you expect from Maxi-Therm.



**maxi·
therm**[®]
steam made easy

Made Easy. Built for You.

Ready to enhance your steam system? Contact our team today to learn how **Maxi-Therm** can elevate your operations.

7559 M.B. Jodoin Montreal QC H1J 2H9
Maxi-therm.net • 514 351 1001

maxi-therm.net