

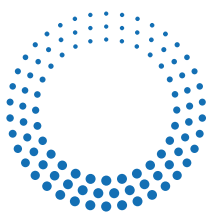
EBV



PFFF

SIDEARM

THE EVOLUTION OF WATER HEATERS IS HERE.



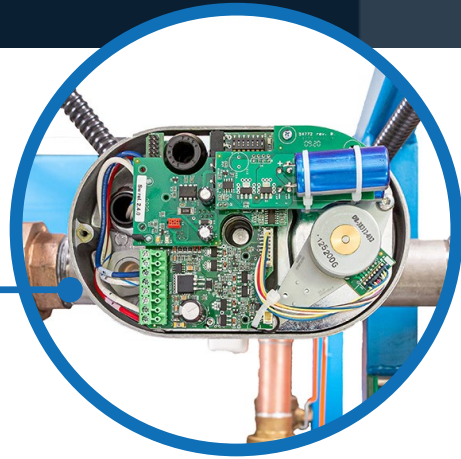
**maxi·
therm**™
beyond steam™

7559 M.B. Jodoin Montreal QC H1J 2H9
MAXI-THERM.NET | 514 351 1001

Follow us on
LinkedIn 

EBV Station

Automatically mix the correct amount of hot water with cold water to help deliver a safe water temperature.



The Maxi-Therm Electronic Blending Valve (EBV) is designed to precisely blend hot and cold water in recirculated domestic water systems for a variety of applications. It provides precise temperature control with programmable setpoint(s) that consistently maintain your desired temperature.

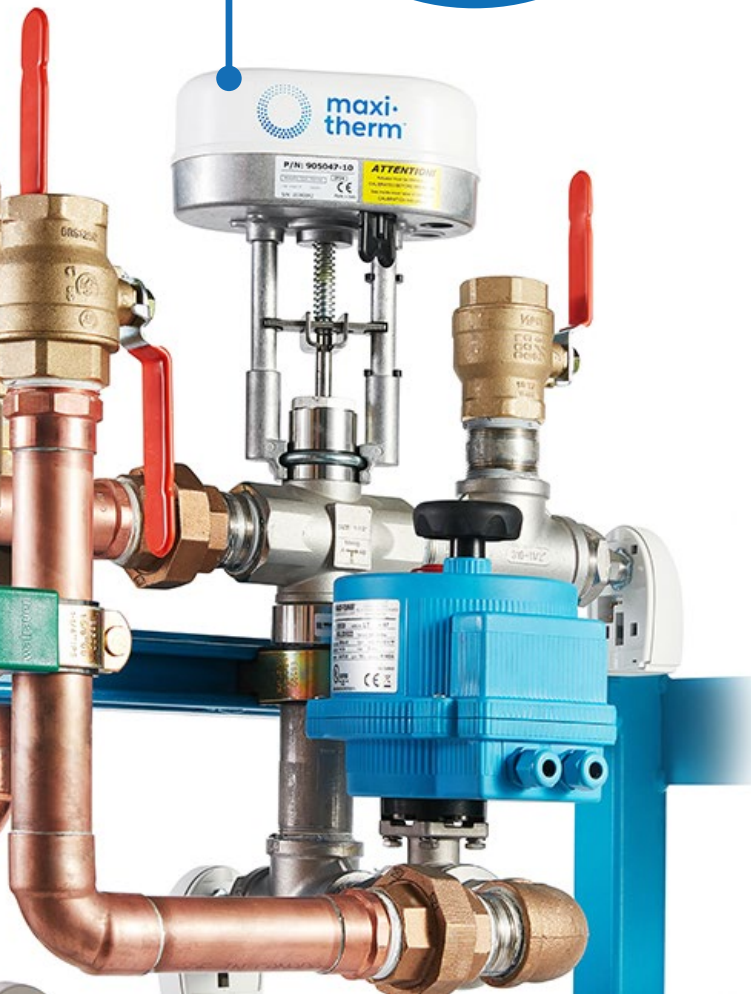
The EBV is equipped with a heavy-duty steel frame that ensures safe manipulation, durability, and its longevity. It's pre-piped, pre-wired and pre-tested and can be wall or floor mounted. Its installation is easy and the start-up simple, all parts are easily accessible for repair/replacement.

Uses:

- Domestic hot water application
- CIP (Clean in Place)
- Reverse osmosis water application
- And any other water regulation process that includes a 3-way valve

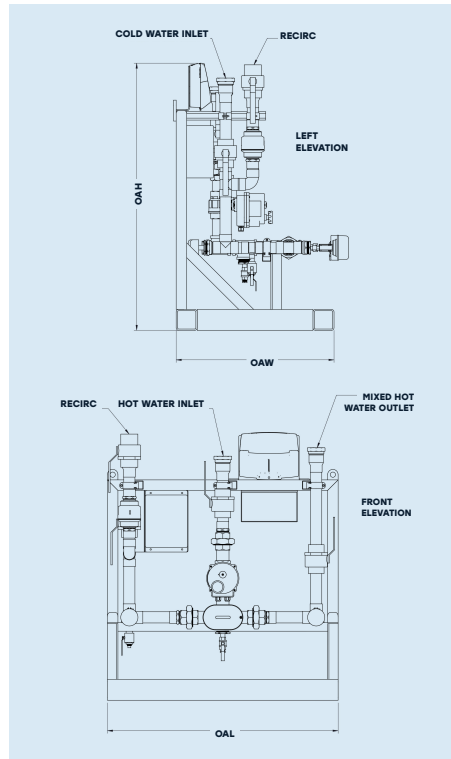
Options:

- The addition of a safety shut-off valve with a capacitor
- BACnet, MODBUS or hardwire communication
- Copper or stainless-steel piping
- Duplex system on one skid for better reliability



DIMENSIONS FOR SINGLE VALVE FLOOR MOUNTED (WALL MOUNTED AVAILABLE)

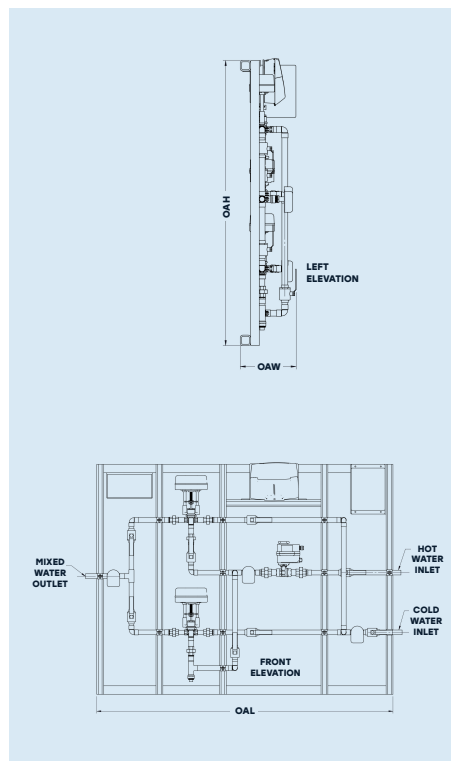
DIMENSIONS MAY VARY AND WILL BE CONFIRMED ON PURCHASE ORDER.



	EBVS-15G	EBVS-30G	EBVS-60G	EBVS-90G	EBVS-120G	EBVS-200G
Cold water inlet	3/4	1	1 1/2	2	2	2 1/2
Hot water inlet	3/4	1	1 1/2	2	2	2 1/2
Blended hot water outlet	3/4	1	1 1/2	2	2	2 1/2
Recirculation	3/4	1	1 1/2	2	2	2 1/2
OAL	38	40	42	44	46	48
OAW	30	30	30	30	32	34
OAH	50	50	50	50	52	54
Approximate 3-way valve pressure drop in psig	4	7	5	4	7	8
Minimum gpm recirculation	5	5	10	15	15	30

DIMENSIONS FOR DUPLEX VALVE WALL MOUNTED (FLOOR MOUNTED AVAILABLE)

DIMENSIONS MAY VARY AND WILL BE CONFIRMED ON PURCHASE ORDER.



	DEBVS-15G	DEBVS-30G	DEBVS-60G	DEBVS-90G	DEBVS-120G	DEBVS-200G
Cold water inlet	3/4	1	1 1/2	2	2	2 1/2
Hot water inlet	3/4	1	1 1/2	2	2	2 1/2
Blended hot water outlet	3/4	1	1 1/2	2	2	2 1/2
Recirculation	3/4	1	1 1/2	2	2	2 1/2
OAL	67	69	71	73	75	78
OAW	8	8	10	10	12	12
OAH	56	56	58	58	58	62
Approximate 3-way valve pressure drop in psig	4	7	5	4	7	8
Minimum gpm recirculation	5	5	10	15	15	30

PFFF Series

Equipped with the EBV controller and 3-way blending valve our Plate & Frame Feed Forward (PFFF) package offers peace of mind for your water-to-water heat transfer application. Comprised of a primary loop for hot water you can generate a secondary hot water loop for uses such as; domestic hot water, snowmelt systems, a secondary heating or cooling loop, a secondary glycol loop or any other heating process that requires accurate temperature control with the use of a 3-way valve.

Piping options include:

- Food-grade piping
- Copper
- Carbon steel
- Stainless steel

Our raw material is primarily sourced from Canada and United States.



Features For Optimal Transportation And Safety:

- Heavy-duty steel frame
- Forklift channels
- Anchor pads



Quick and easy installation with a preconfigured panel that can be modified according to your needs prior to shipping.



Upgrade to our MTIntelligent Control Panel with its intuitive and user-friendly touchscreen which provides trends, analytics, Wi-Fi connectivity for remote access and seamless technical support.

Sidearm

The Maxi-Therm Side-Arm is a combination of any MCU system, (Simplex, Duplex, ZeroLag™ and U5P) and the PFFF system.

By combining building heat and domestic hot water applications together, only 1 steam inlet and 1 condensate outlet will be required to operate both processes. If footprint is limited, you could operate additional processes such as:

- **Domestic hot water**
- **Secondary hot water loop/ heating loop**
- **Snow melt**
- **Lab hot water**
- **Industrial process**

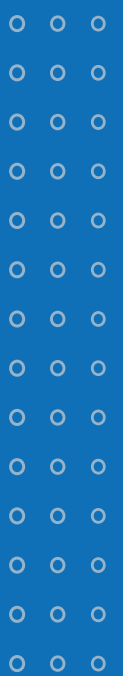
Advantages:

- All our MCU systems come equipped with our MTIntelligent control panel which offers complete peace of mind.
- Add additional PFFFs for multiple hot water loops or redundancy purposes.

Features For Optimal Transportation And Safety:

- Anchor pads • Heavy-duty steel frame • Forklift channels

SIDEARM



How you're covered:

Parts	Our limited warranties
Shell and tube heat exchanger	10-years
Sensors, controller, steam traps, and plate & frame heat exchanger.	24-months after shipping or 18-months after start-up (whichever comes first).
Control valve	5-years

Innovation never stops at Maxi-Therm.

The evolution of water heaters is here.

CONFORMS TO:

- ASSE 1017
- CALIFORNIA LEAD FREE PLUMBING LAW
- CSA B 125.3 (NSF/ANSI 61 SECTION 8)



7559 M.B. Jodoin Montreal QC H1J 2H9
MAXI-THERM.NET | 514 351 1001

Follow us on