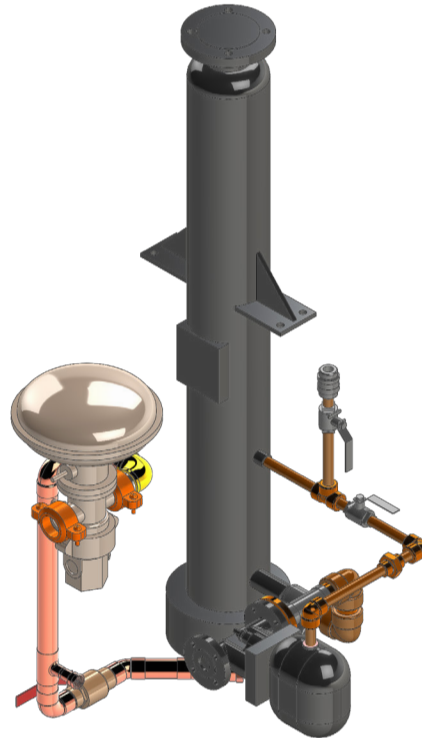

VFFF – Feed Forward Instantaneous Water Heater



Features

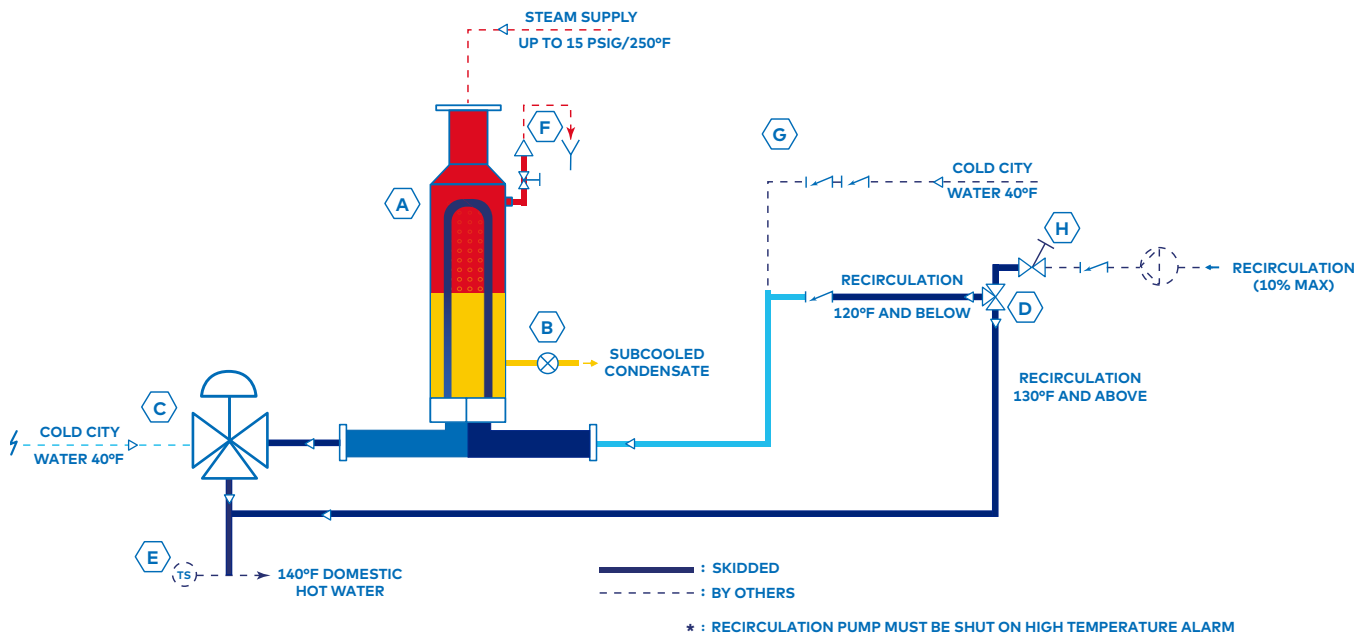
- Vertical flooded double-wall heat exchanger with subcooling condensate below 212°F, resulting in a 0% flash return system
- 5% to 8% energy savings and reduction in carbon footprint
- Non-electric 3-way blending valve bronze body NSF-61 compliance for an instantaneous stable outlet city water temperature at 4°F
- Steam pressure must be controlled below 15 psig
- No storage tank required
- No electrical power required
- Capacity of 10 to 120 US gpm/unit

VFFF – Feed Forward Instantaneous Water Heater

Technical Diagram

U.S. PATENT: #14/631,932

CAN. PATENT: #2,883,083



- A = HEAT EXCHANGER
- B = STEAM TRAP
- C = BLENDING VALVE
- D = THERMOSTATIC 3-WAY VALVE (DIVERTING)
- E = TEMPERATURE SENSOR (BY OTHERS) TO MONITOR
TEMPERATURE AND GENERATE ALARMS* AS REQUIRED
- F = AUTOMATIC AIR ELIMINATOR
- G = BACKFLOW PREVENTER (BY OTHERS)
- H = BALANCING VALVE